

COMPARISON

KROKODILE - IMPAKTOR 250



Know your competitors machines!

HOPPER

KROKODILE



IMPAKTOR 250



KROKODILE

POWERUNIT VOLVO PENTA:

- Stage V: 160kW / 220Hp Diesel Engine
- Tier 4Final: 160kW / 220Hp Diesel Engine
- Stage 3A: 160kW / 220Hp Diesel Engine

IMPAKTOR 250

• POWERUNIT VOLVO PENTA:

- **Stage V: 129kW / 175Hp** Diesel Engine
- Tier 4Final: 160kW / 220Hp Diesel Engine
- Stage 3A: 160kW / 220Hp Diesel Engine

<i>SHAFTS</i>	<i>1500mm X 2 (60')</i> <i>680mm DIAMETER</i> <i>0-45 RPM</i>
<i>BONFIGLIOLI</i>	<i>160.000 torque</i>

<i>OUTPUT POTENTIAL UP TO</i>	<i>200tph / 220 US tph C&D/ASPHALT</i> <i>20tph / 22 US tpd WOOD/WASTE</i>
<i>GRANULOMETRY</i>	<i>60mm to 150mm</i>

KROKODILE

- Capacity: 2,3 mc
- Width: 1575 mm
- Length: 2500 mm
- Material: **HARDOX 450 – BOLTED**
- Structure: FIXED
- Loading Height: 2600 mm

IMPAKTOR 250

- Capacity: 2,3 mc
- Width: 1575 mm
- Length: 2500 mm
- Material: **??????? – weld parts that have to cut to replace it**
- Structure: FIXED
- Loading Height: 2600 mm

HOPPER

KROKODILE

THE WHOLE INTERNAL SI MADE IN HARDOX ADN
BOLTED TO EASY REPLACE



IMPAKTOR 250

HAS ONLY LATERAL SIDE AND NOT ON THE GEAR
SIDE – IS WELDED



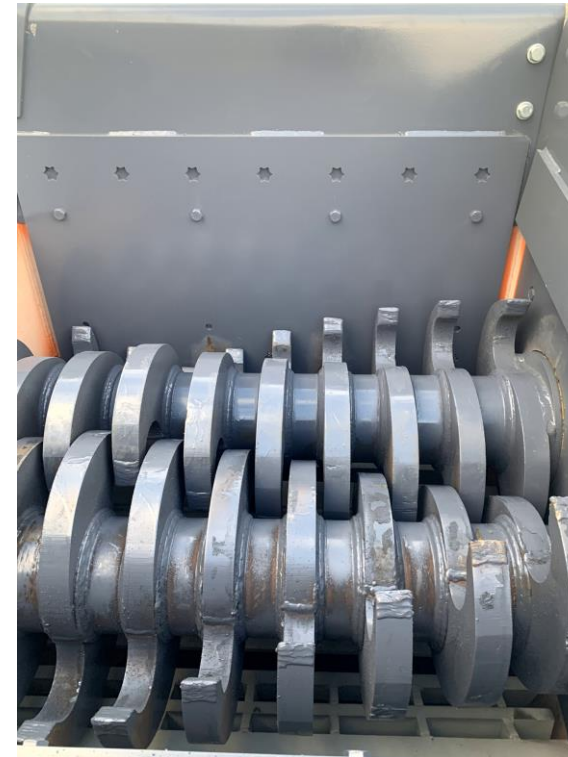
KROKODILE

THE THICKNESS OF LATERAL IS 15MM –GEAR SIDE
10MM



IMPAKTOR 250

THE THICKNESS OF WEAR PARTS CHANGE EACH
MACHINES FROM 10 TO 15MM



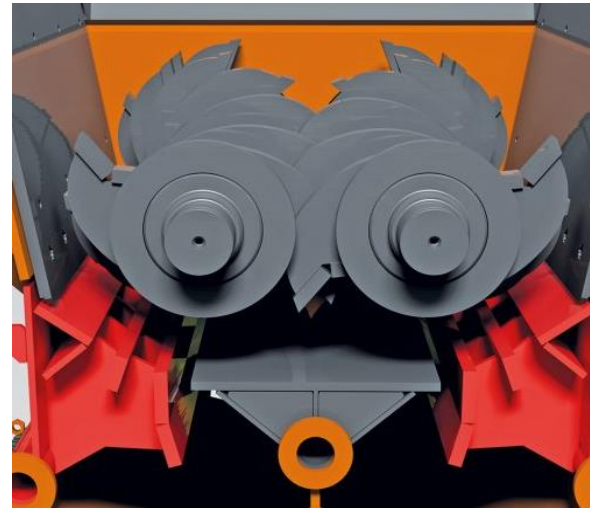
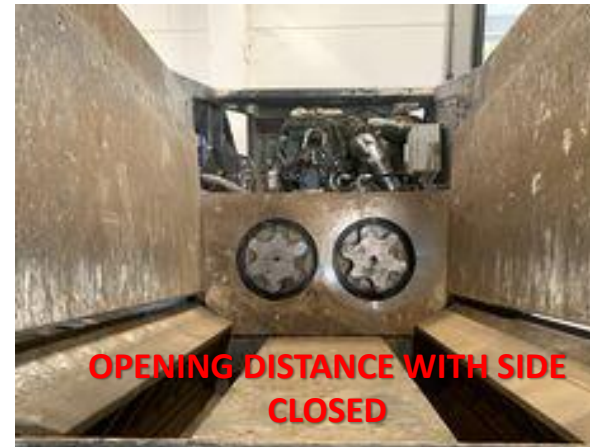
SIDE WALL GRID

KROKODILE

IMPAKTOR 250

THE GRANULOMETRY OF MATERIAL IS SETTING BY THE SIDE WALL GRID THAT CAN WORK CLOSE (to have material from 0 to 80mm) or OPEN (to have material from 0 to 100/150 AND CAN WORK DIFFERENT MATERIAL LIKE WOOD OR PLASTIC)

MANUALLY PIN – HYDRAULIC OPENING



MANUALLY PIN – MANUALLY OPENING

THE PIN HAVE TO TAKE OUT
MANUALLY SAME SYSTEM FOR
BOTH MACHINE



SIDE WALL GRID

KROKODILE

MANUALLY PIN – HYDRAULIC OPENING



IMPAKTOR 250

MANUALLY PIN – MANUALLY OPENING



CLICK-ON IS SHORT VIDEO

SHAFTS WITH SUPPORT

IMPAKTOR 250

KROKODILE

SHAFTS FOR C&D and WOOD&WASTE MATERIALE

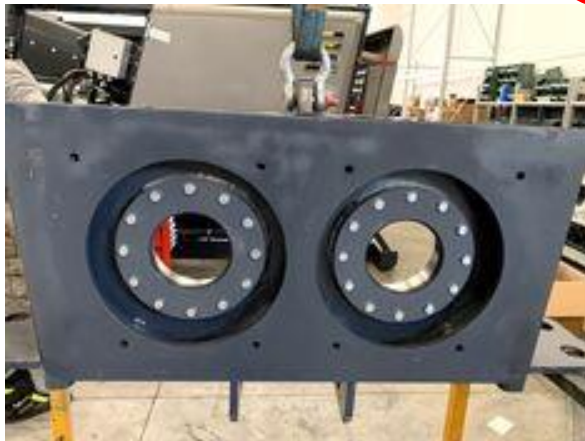
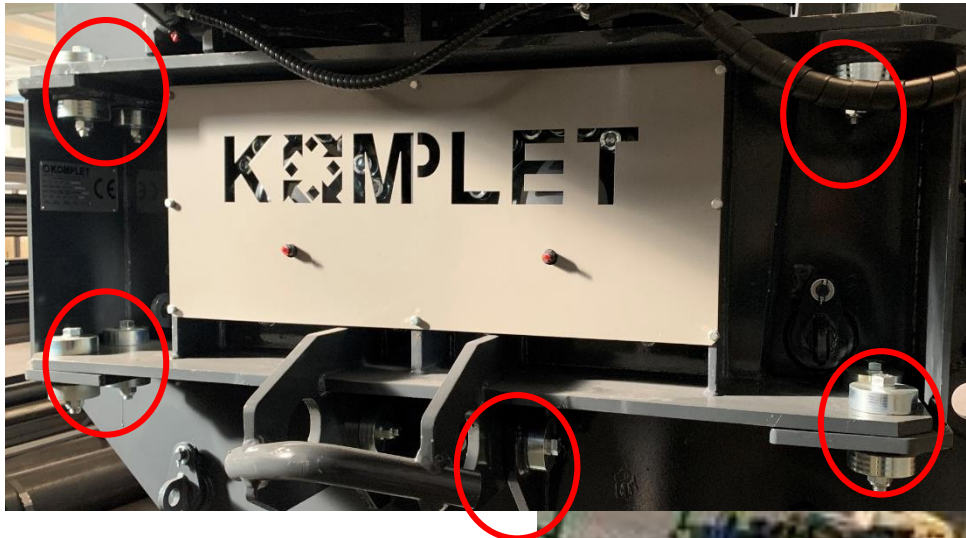
SHAFTS FOR C&D and WOOD&WASTE MATERIALE



SHAFTS WITH SUPPORT

KROKODILE

SHAFTS SUPPORT WITH LEES BOLTS TO FIX AND WITHOUT ANTIWEAR-PARTS



IMPAKTOR 250

SHAFTS SUPPORT WITH LEES BOLTS TO FIX AND WITHOUT ANTIWEAR-PARTS



KROKODILE

HYDRAULIC FOLDING – HARD&SAFETY STRUCTURE –
HEIHG QUALITY OF ANTICUTTING RUBBER BELT –
ANTIWEAR SKIRTS-



Discharge height (mm)	3.250
Width (mm)	800

PRODUCT CONVEYOR

IMPAKTOR 250

FOLDING BY CHAIN – POOR QUALITY OF CONSTRUCTION
MATERAIL FROM ROLLER TO FRAME TO SKIRTS TO
HYDRAULIC ENGINE SUPORT



Discharge height (mm)	3.400
Width (mm)	800

KROKODILE

HYDRAULIC FOLDING – HARD&SAFETY STRUCTURE –
HEIGH QUALITY OF ANTICUTTING RUBBER BELT –
ANTIWEAR SKIRTS-



PRODUCT CONVEYOR

IMPAKTOR 250

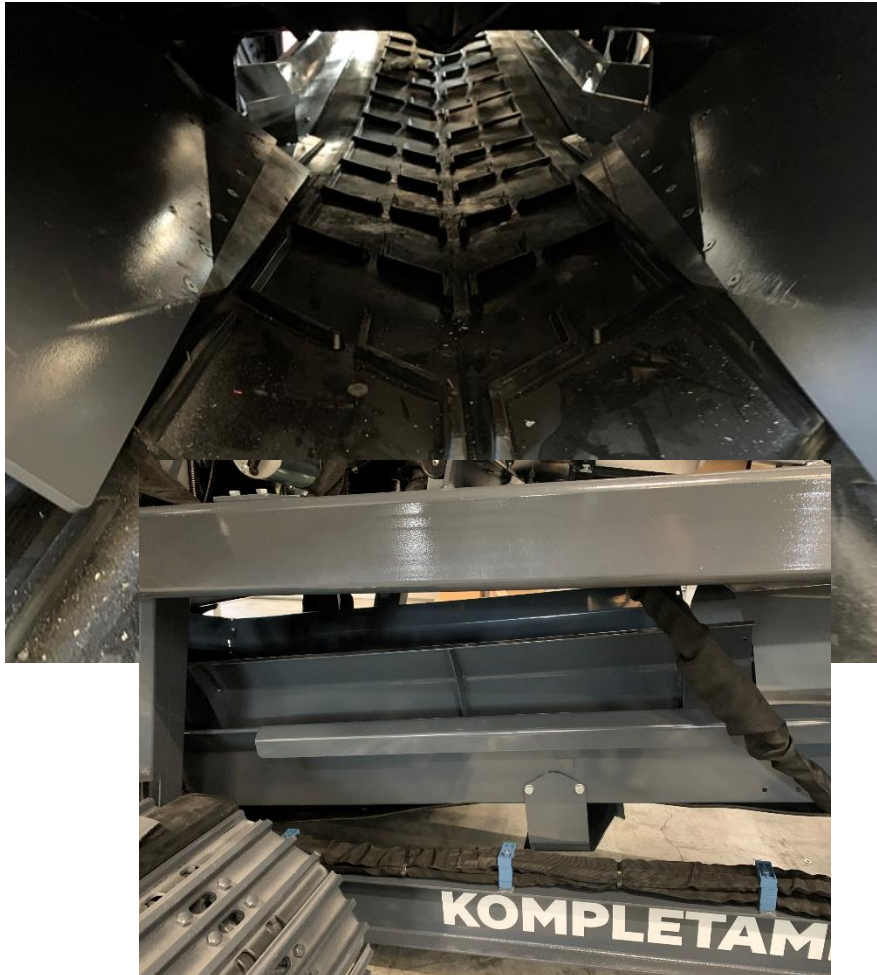
FOLDING BY CHAIN – POOR QUALITY OF CONSTRUCTION
MATERAIL FROM ROLLER TO FRAME TO SKIRTS TO
HYDRAULIC ENGINE SUPORT



PRODUCT CONVEYOR

KROKODILE

HYDRAULIC FOLDING – HARD&SAFETY STRUCTURE –
HIGH QUALITY OF ANTICUTTING RUBBER BELT –
ANTIWEAR SKIRTS-



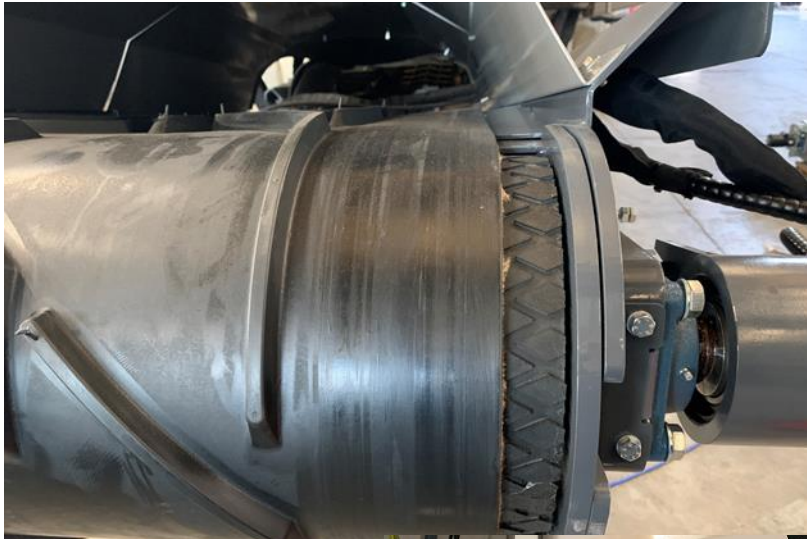
IMPAKTOR 250

FOLDING BY CHAIN – POOR QUALITY OF CONSTRUCTION
MATERIAL FROM ROLLER TO FRAME TO SKIRTS TO
HYDRAULIC ENGINE SUPPORT



KROKODILE

HYDRAULIC FOLDING – HARD&SAFETY STRUCTURE –
HEIGH QUALITY OF ANTICUTTING RUBBER BELT –
ANTIWEAR SKIRTS-



PRODUCT CONVEYOR IMPAKTOR 250

FOLDING BY CHAIN – POOR QUALITY OF CONSTRUCTION
MATERAIL FROM ROLLER TO FRAME TO SKIRTS TO
HYDRAULIC ENGINE SUPORT



PRODUCT CONVEYOR

KROKODILE

OVERBAND MAGNETIC WITH RAISE & LOWER SYSTEM



IMPAKTOR 250

OVERBAND MAGNETIC UNDER THE FRAME



CONTROL UNIT

KROKODILE

COMPUTER ON BOARD WITH REMOTE AND
DOGLEAD COTNROL -



IMPAKTOR 250

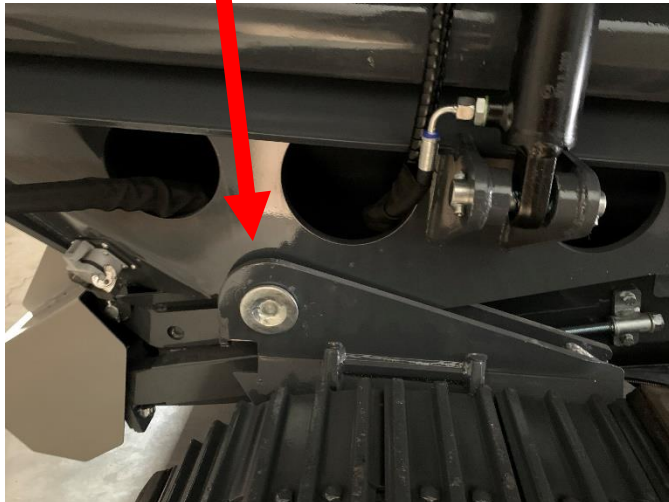
ONLY REMOTE –AND LEVEL – WITHOUR ELETRONIC SYSTEM



CONTROL UNIT

KROKODILE

STRUCTURE FRAME REINFORCED AND FIX BY PIN



IMPAKTOR 250

FIXED AND WELDED STRUCTURE FRAME



CONTROL UNIT

KROKODILE

STRUCTURE FRAME REINFORCED AND FIX BY PIN



IMPAKTOR 250

FIXED AND WELDED STRUCTURE FRAME



CONTROL UNIT

KROKODILE

EASY MAINTENANCE



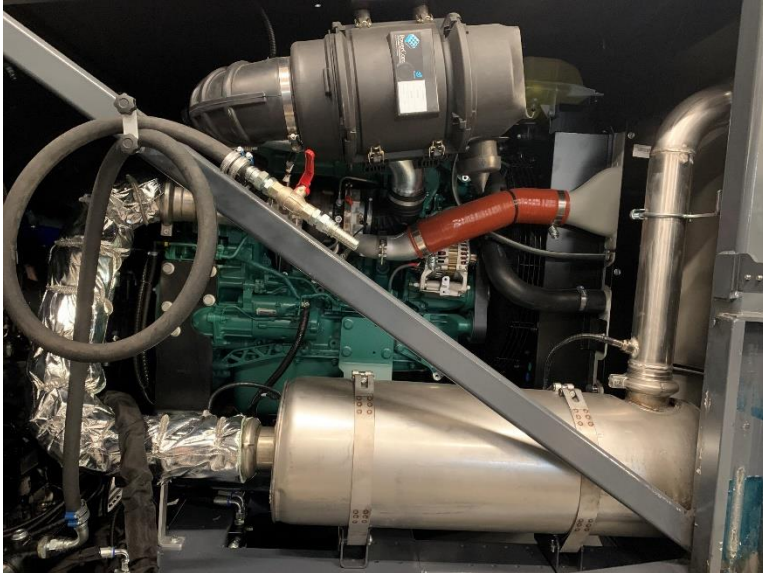
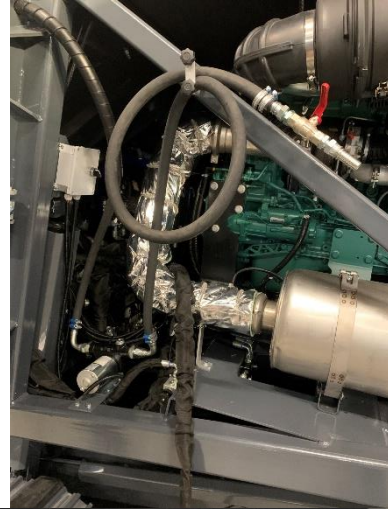
IMPAKTOR 250

TO CHANGE THE SIDE WALL GRID NEED TO DISMANTEL SEVERAL APRTRS BECAUSE CHASSIS IS WELDED

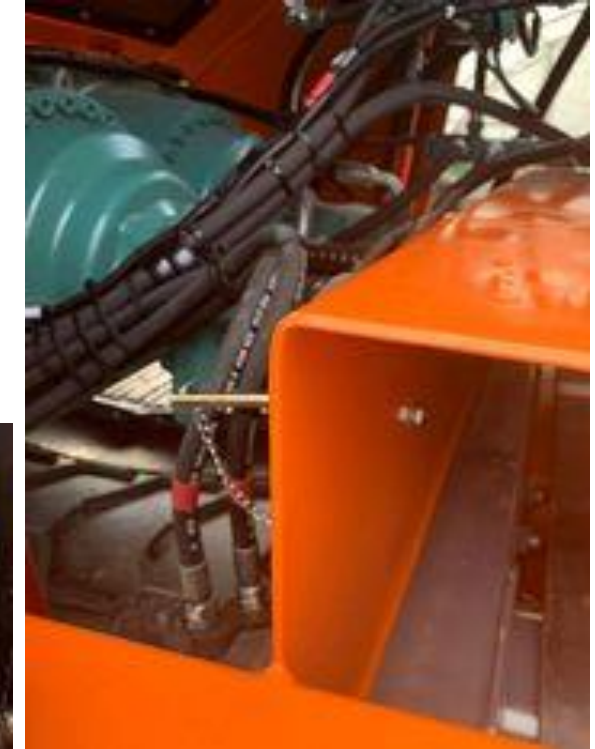
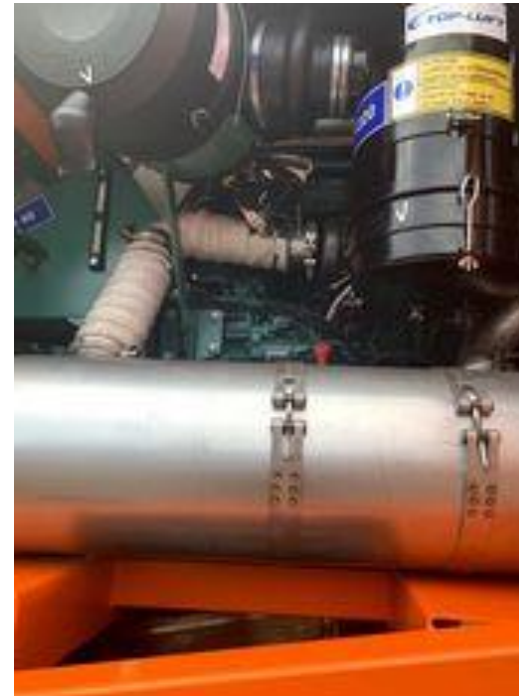


CONTROL UNIT

KROKODILE



IMPAKTOR 250



CONTROL UNIT

KROKODILE



IMPAKTOR 250

