



KROKODILE TECHNICAL SPECIFICATION

- *FEATURES/BENEFITS*
- *HOPPER*
- *FEEDER*
- *SHREDDER SHAFT*
- *PRODUCT CONVEYOR*
- *POWERUNIT*
- *TRACK/CHASSIS*
- *CONTROL*
- *WEIGHT&DIMENSION*
- *OPTIONS*
- *GALLERY&MEDIA*
- *COMPETITORS*

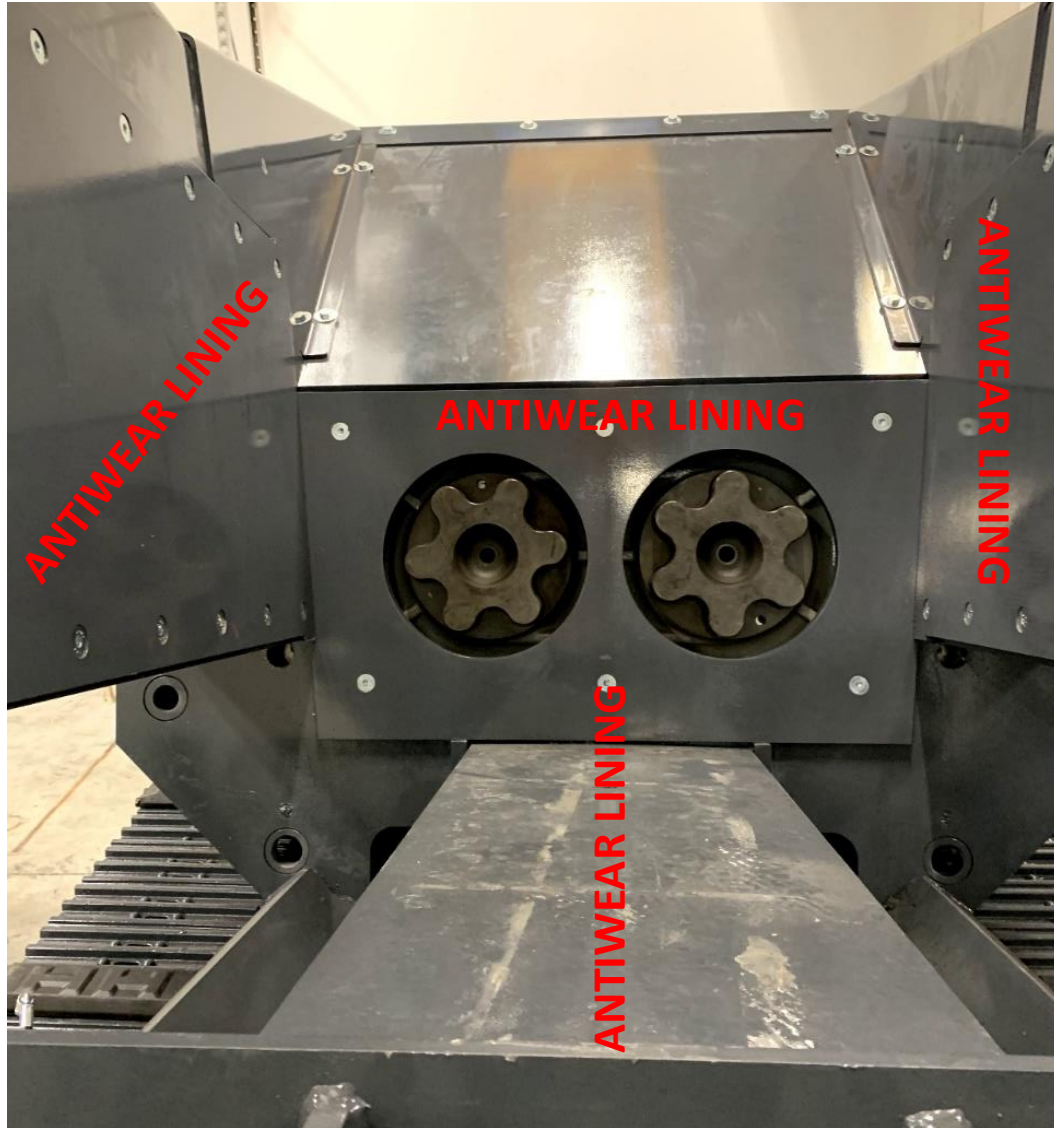


SHREDDER

FEATURES BENEFITS

- ✓ ***Compact and Low weight 16Ton,***
- ✓ ***> Auto-reverse function help product cutting tools,***
- ✓ ***Low wear part maintenace,***
- ✓ ***Short Set-up Times,***
- ✓ ***Tracks&Skip hook provide exceptional, Maneuverability,***
- ✓ ***Possibility to work with damp or wet material,***
- ✓ ***Fast shafts changing system,***

Material	Throughput*	Final Size*
Construction Debris	80 – 120 t/h	0 – 60 mm
Concrete with Rebar (up to 16 mm)	70 – 100 t/h	0 – 60 mm
Concrete Railroad Ties	4 ties/min	0 – 60 mm
Tarmac/Asphalt	80 – 120 t/h	0 – 60 mm
White Goods	10 t/h	250 mm
Tree Roots (up to 400 mm)	15 t/h	250 mm
Waste Wood	15-20 t/h	250 mm
Waste	10-20 t/h	250 mm



THE GRANULOMETRY OF MATERIAL IS SETTING BY THE SIDE WALL GRID THAT CAN WORK CLOSE (to have material from 0 to 80mm) or OPEN (to have material from 0 to 100/150 AND CAN WORK DIFFERENT MATERIAL LIKE WOOD OR PLASTIC

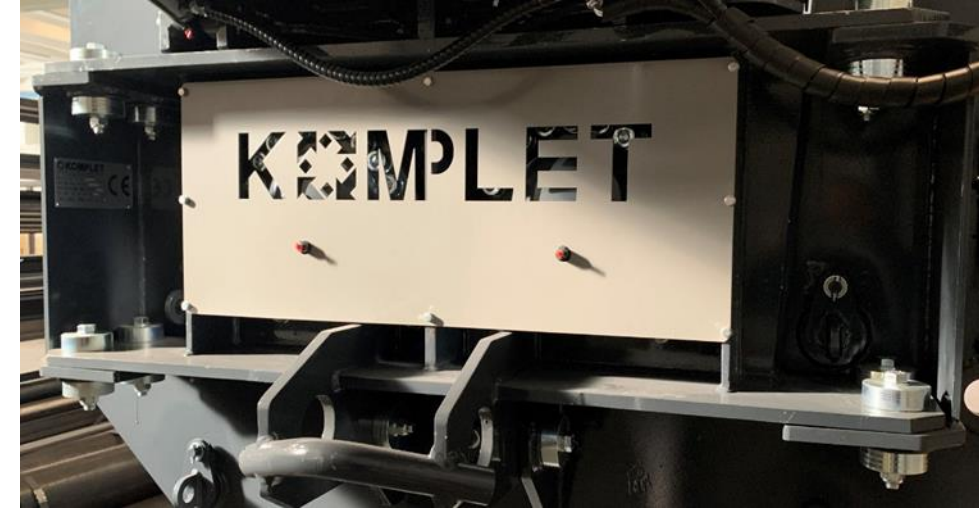
- Capacity: 2,3 mc
- Width: 1575 mm
- Length: 2500 mm
- Material: **HARDOX 450 – BOLTED**
- Structure: FIXED
- Loading Height: 2600 mm



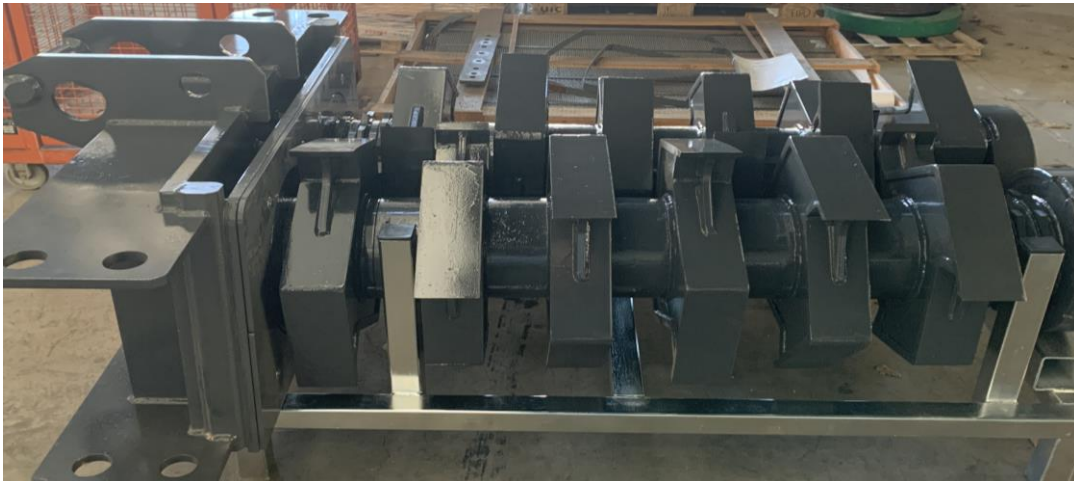


THE REAR TILT HOPPER
IS MOVE BY REMOTE
CONTROL

SHAFTS FOR C&D and WASTE MATERIALS



SHAFTS SUPPORT FIX BY BOLTS ON THE SHRED CHAMBER
TO EASY AND QUICK CHANGE



SHAFTS	1500mm X 2 (60')
	680mm DIAMETER -0-45 RPM
BONFIGLIOLI	160.000 torque

MANUALLY PIN – HYDRAULIC OPENING

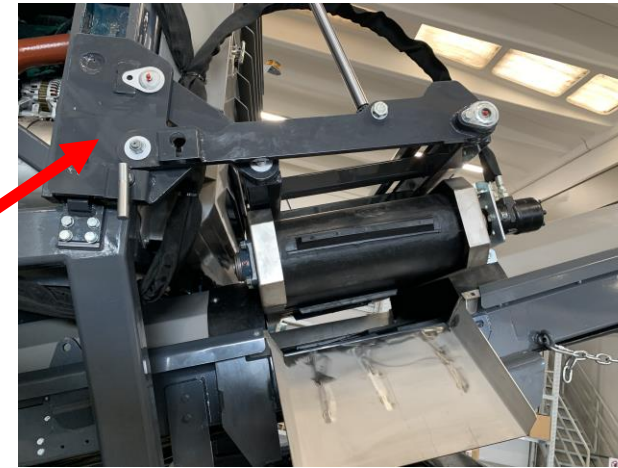


THE GRANULOMETRY OF MATERIAL IS SETTING BY THE SIDE WALL GRID THAT CAN WORK CLOSE (to have material from 0 to 80mm) or OPEN (to have material from 0 to 100/150 AND CAN WORK DIFFERENT MATERIAL LIKE WOOD OR PLASTIC

PRODUCT CONVEYOR

HYDRAULIC FOLDING –
HARD&SAFETY STRUCTURE –
HIGH QUALITY OF
ANTICUTTING RUBBER BELT –
ANTIWEAR SKIRTS-

OVERBAND MAGNETIC
WITH RAISE & LOWER
SYSTEM and inox chute

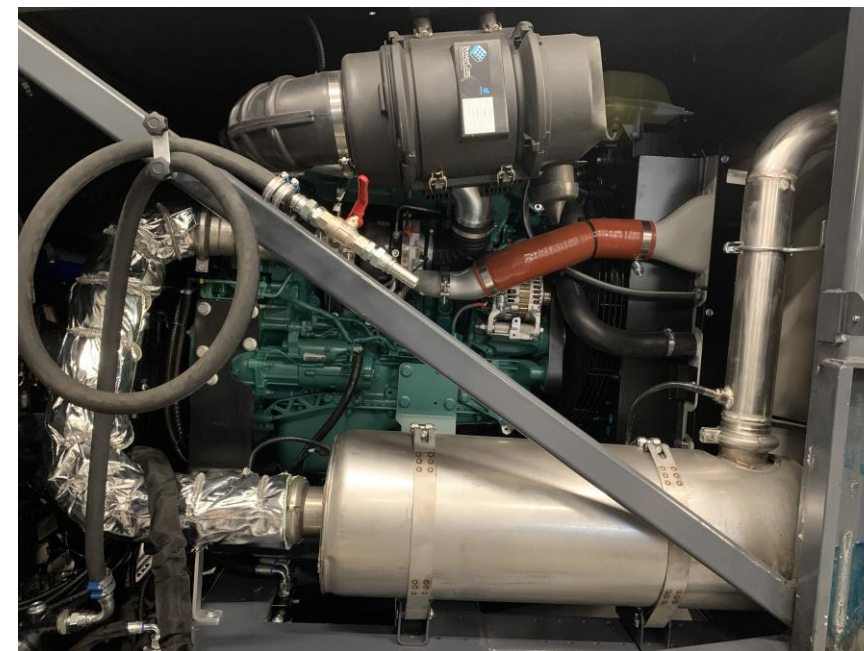
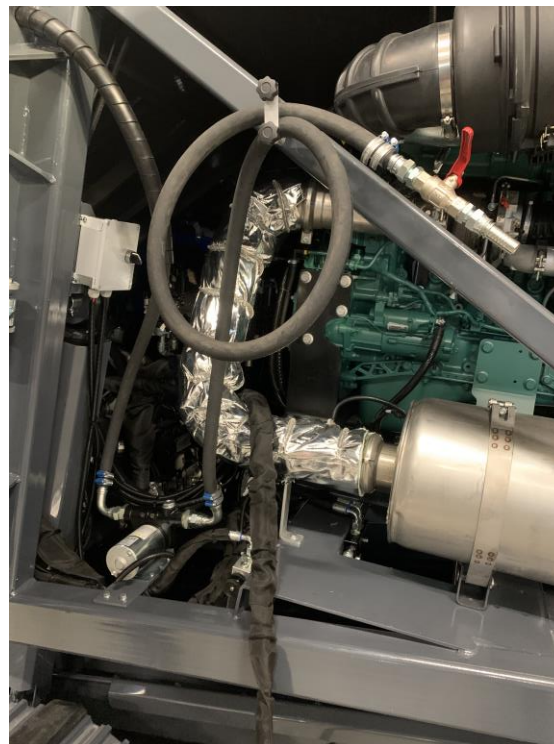


Discharge height (mm) 3.250
Width (mm) 800

SPRAY BARS TO ANTI-DUST (have to be
connected to water line)

VOLVO PENTA: CHOOSE YOUR MARKET AREA:

- Stage V: 160kW / 220Hp Diesel Engine
- Tier 4Final: 160kW / 220Hp Diesel Engine
- Stage 3A: 160kW / 220Hp Diesel Engine



ELETRICAL FUEL PUMP AS STANDARD





The machine can be drive by undercarrige or by hooklift (to load by hook lift if have a rear tilt hopper should be dismantle in some country depending on internal legisaltion)

DRIVE BY: DOG-LEAD AND REMOTE





\COMPUTER ON BOARD MENAGE THE RPM OF SHAFT AND ALSO COMUNICATE WITH HYDRAULIC SYSTEM TO HAVE REVERSE AND DIFFERENT RPM OF ROTATION OF SHAFTS

\ DIFFERENT SETTING PROGRAMM DEPENDING ON WASTE MATERIAL





Click on to watch video



Click on to watch video

